

✓

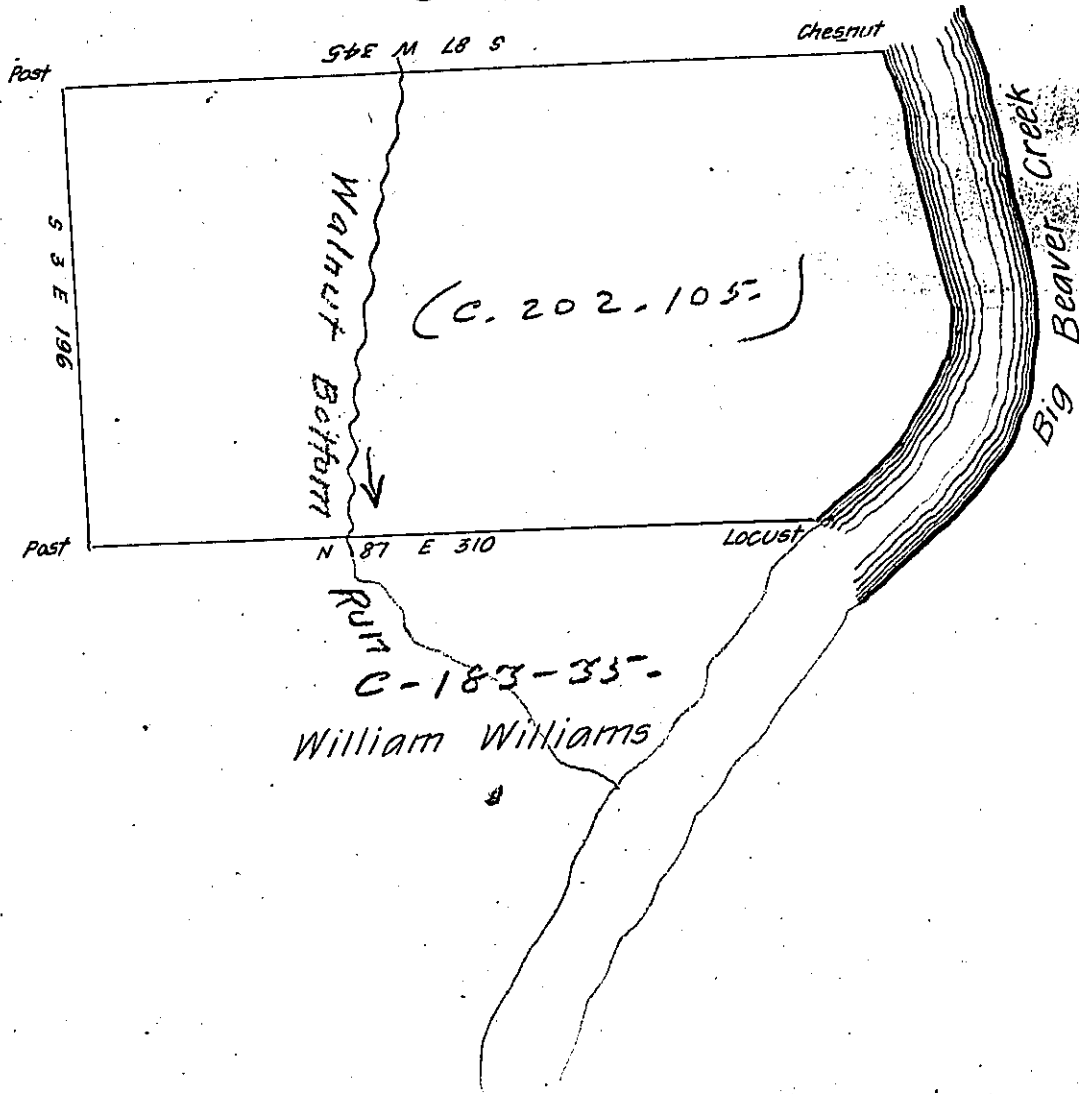
SAMUEL ADAMS

0-60

Courses & distances on Creek

- N 50 E 44 pers
- ✓ N 30 E 40
- ✓ N 5 E 30
- ✓ N 15 W 102
- ✓ N 40 W 8 to Chestnut 224

Hugh Cunningham



The above is a draft of a tract of land surveyed March 26th 1804
 in pursuance of a Warrant granted to Nathan Stockman dated January 17th 1804
 Situate on the West bank of Big Beaver Creek in ^{South} Beaver Township & in the County of
 Beaver Containing 411 Acres & 96 perches with allowance of six per cent &c.

Jas Carothers D.S.

Samuel Cochran Esquire

Surveyor General

IN TESTIMONY that the above is a copy of the original remaining on file in
 the Department of Internal Affairs of Pennsylvania, made
 conformably to an Act of Assembly approved the 16th day of
 February 1833, I have hereunto set my hand and caused
 the Seal of said Department to be affixed at Harrisburg,
 this nineteenth day of December 1906

Loach Brown
 Secretary of Internal Affairs.